

Heatless adsorption dryers

PH 12-64 HE with structured desiccant

NEW



The Pneumatech PH HE adsorption dryer has always earned its High-Efficiency label. Its new models with the Solides desiccant take these energy savings to a new level. In fact, thanks to their groundbreaking structured desiccant, the newest additions to the PH HE range offer the lowest total cost of ownership on the market. They also set new standards in reliability, low maintenance requirements, and versatility for truly superior dryer performance.

Features and benefits

- Solides structured desiccant offers highly efficient air flow and regeneration
- Stable low pressure dew point
- 40% longer desiccant lifetime
- Easy desiccant maintenance
- No desiccant dust that can cause dryer failures and compromise production
- Purge nozzle optimization
- Delivered with two pre-filters (G & C grade)
- PDP control (optional)
- Wall-mounting kit (optional)
- Condensate collection (optional)

General specifications

- Heatless adsorption dryers: extruded profile design
- Dew points achievable: -20°C/-5°F, -40°C/-40°F (with structured desiccant) -70°C/-94°F (with beads)
- Pressure range: 4-14 barg/58-203 psig
- Ambient temperature range: 2-45°C/35,6-113°F
- Inlet temperature range: 2-60°C/35,6-140°F
- Power supply: 115VAC-230VAC 50/60Hz

A new type of heatless adsorption dryer

Solides structured desiccant:

- Much more efficient air flow reduces energy costs
- Evenly distributed air flow extends desiccant lifetime
- 40% longer lifetime
- No desiccant dust to filter out
- Fast and easy maintenance

DC1 controller:

- Easy to use
- Optimizes performance and efficiency of the dryer
- Available with IP65/Nema4 (optional)

Technical specifications for PH 12 HE up to PH 64 HE

Specifications	Unit	Technical specifications for PH 12-64 HE (Versions PDP -40° / -40°F)						Technical specifications PH 17-94 HE (PDP -20°C / -4°F)						Technical specifications PH 14-40 HE (PDP -70°C / -100°F)					
		PH 12 HE	PH 22 HE	PH 33 HE	PH 43 HE	PH 53 HE	PH 64 HE	PH 17 HE	PH 34 HE	PH 49 HE	PH 64 HE	PH 79 HE	PH 94 HE	PH 14 HE	PH 21 HE	PH 27 HE	PH 33 HE	PH 40 HE	
Nominal volume flow at dryer inlet	l/s	5.5	10	15	20	25	30	8	16	23	30	37	44	6	9	12	15	18	
	m³/h	19.8	36	54	72	90	108	29	58	83	108	133	158	21.6	32.4	43.2	54	64.8	
Connections Inlet / Outlet	G	1"	1"	1"	1"	1"	1"	1"	1"	1"	1"	1"	1"	1"	1"	1"	1"	1"	
	NPT	1"	1"	1"	1"	1"	1"	1"	1"	1"	1"	1"	1"	1"	1"	1"	1"	1"	
Pressure drop at max. flow	barg	0.08	0.11	0.15	0.18	0.24	0.25	0.08	0.12	0.17	0.25	0.32	0.37	0.045	0.085	0.13	0.18	0.22	
	psig	1.16	1.6	2.17	2.61	3.48	3.63	1.16	1.74	2.47	3.63	4.64	5.37	0.65	1.23	1.89	2.61	3.19	
Height	mm	949	1104	1259	1414	1594	1754	949	1104	1259	1414	1594	1754	1104	1259	1414	1594	1754	
	inch	37.4	43.5	49.6	55.7	62.8	69.1	37.4	43.5	49.6	55.7	62.8	69.1	43.5	49.6	55.7	62.8	69.1	
Width	mm	363	363	363	363	363	363	363	363	363	363	363	363	363	363	363	363	363	
	inch	14.3	14.3	14.3	14.3	14.3	14.3	14.3	14.3	14.3	14.3	14.3	14.3	14.3	14.3	14.3	14.3	14.3	
Length	mm	396	396	396	396	396	396	396	396	396	396	396	396	396	396	396	396	396	
	inch	15.6	15.6	15.6	15.6	15.6	15.6	15.6	15.6	15.6	15.6	15.6	15.6	15.6	15.6	15.6	15.6	15.6	
Mass	KG	32	37	42	48	54	59	32	37	42	48	54	59	39	45	50	57	63	
	Lb	70.5	81.6	92.6	105.8	119	130.1	70.5	81.6	92.6	105.8	119	130.1	86	99.2	110.2	125.7	138.9	
Included pre-filter size	Fine filter	FG15	FG15	FG15	FG24	FG33	FG33	FG15	FG24	FG24	FG33	FG49	FG49	FG15	FG15	FG15	FG15	FG24	
	Super fine filter	FC15	FC15	FC15	FC24	FC33	FC33	FC15	FC24	FC24	FC33	FC49	FC49	FC15	FC15	FC15	FC15	FC24	
	Dust filter	NA	NA	NA	NA	NA	NA	NA	NA	NA	NA	NA	NA	FS15	FS15	FS15	FS15	FS24	

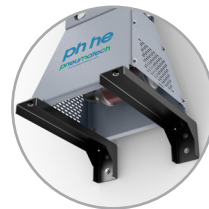
Options



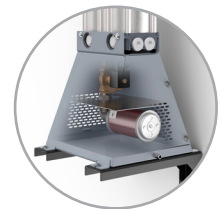
PDP control



IP65 / Nema4



Wall mounting kit



Condensate collector