



Solid, simple and smart:
advanced reliability in compressed air

RMM 30 - 45 / RMM IVR 30 - 45



RMM 30 - 45

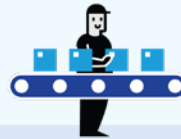
RMM 30 - 45 IVR

Your production relies on compressed air, so you know the value of a compressor you can always count on. The RMM was built to be your no-hassle, zero-frustration work floor companion. While typically compressors in this segment are belt-driven, our newest oil-injected rotary screw compressor comes with a direct gear transmission. That means no belts to tension, maintain and replace. The RMM also features an advanced controller with integrated connectivity to easily manage and monitor your compressed air system. The result: reliability, ease-of-use and limited maintenance from the very first moment you commission your new RMM.



1. Simple installation, easy to use

- Plug-and-play installation
- No special foundation required
- Small footprint
- Ready-to-use, integrated dryer
- Intuitive controller



2. Increased productivity, reliable operations

- No downtime for belt tensioning or replacement
- Quiet and smooth gear transmission
- Low noise level
- High-capacity oil/air coolers and perfect air filtration ensure a long lifetime
- Unbeatable performance with heavy-duty IP55 motors



3. Connectivity for performance and reliability

- Remote connectivity, anywhere, any time
- Notifications and shutdown alarms eliminate risk of downtime
- Increased reliability with planned service interventions
- Cost optimization advice



4. Advanced cost savings

- 3% savings versus traditional belt-driven transmissions
- IE3 motor as standard
- Variable Speed version available for 35% energy savings



5. Less maintenance, no-hassle service

- Easy access to service components
- Quick oil level check through front panel gauge
- Service becomes a one-person job
- Service plans tailored to your needs

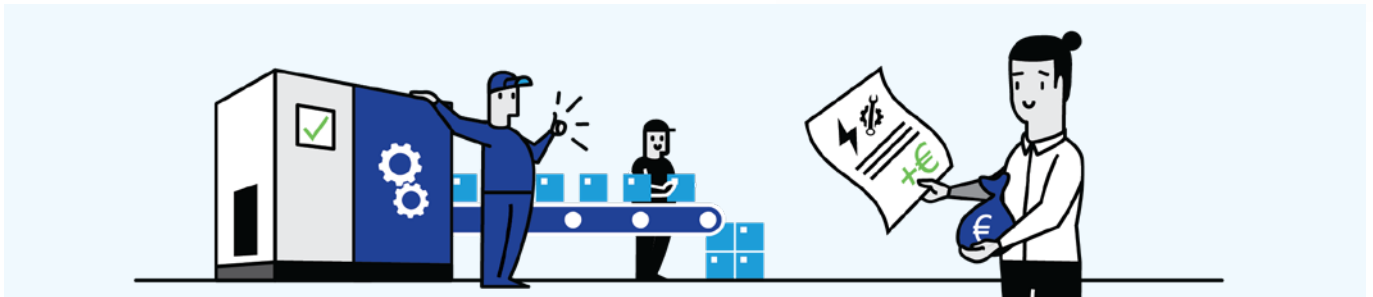


More value for money

With the RMM, we set out to build the better, more reliable compressor on the market. The compressor offers some major innovations that will you give a lifetime of value and savings.

A highly reliable gear transmission

A belt-driven compressor has a higher risk of downtime and maintenance-related costs. Unscheduled belt tensioning and replacement cause productivity losses and there is always the risk of post-service belt misalignment. That is why the RMM comes with a gear drive transmission. You have no belts to replace and enjoy lower operating (service) costs. What is more, the RMM is 3% more energy efficient compared to belt-driven compressors.



ES4000S controller for optimal performance

The new RMM comes standard equipped with an ES4000S controller that manages and monitors compressor performance. Easy to use, the ES4000S and the optional ES4000T with touch screen give you compressor updates and service alerts before they become a problem.

The integrated **ICONS** connectivity gives you the advanced benefits of remote monitoring and management:

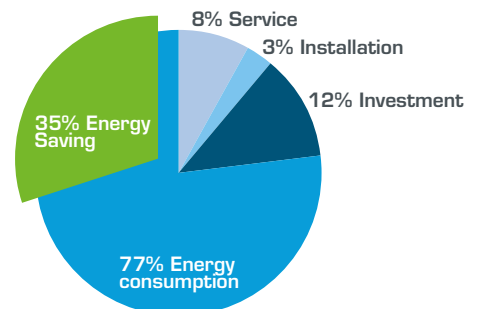
- Remote monitoring that helps you optimize your compressed air system and save energy.
- On-time maintenance to optimize costs and ensure a longer machine life.
- Potential problems are recognized before they can pose a threat to the continuity of your production.

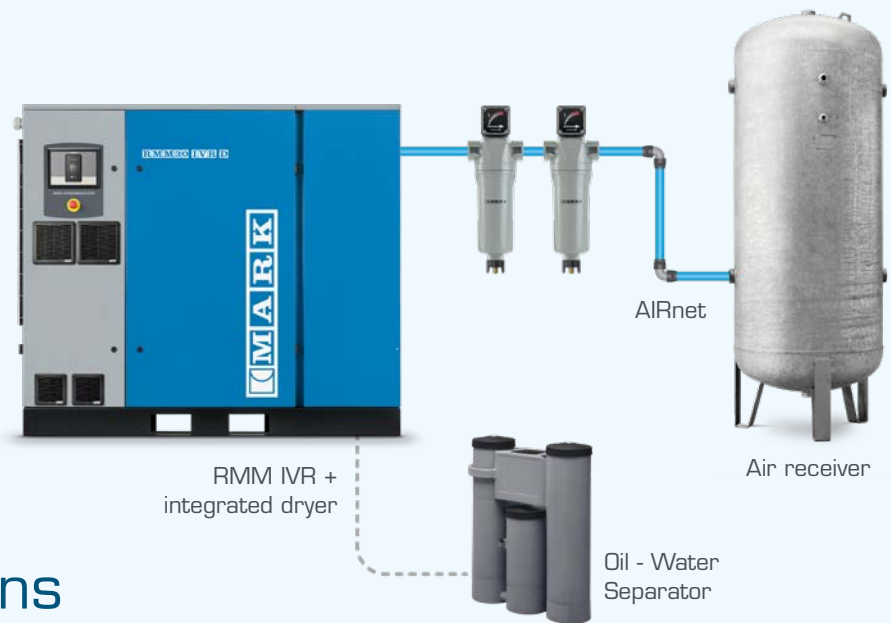
VSD: double digit energy savings

Is your work floor always running at 100%? A traditional compressor is, even when you don't need its full capacity. For most production environments, compressed air use fluctuates during the day or week.

That is why the RMM offers optional variable speed drive technology. A

RMM with VSD matches its air delivery to your actual need. That means it is not using – and wasting – energy when your demand for compressed air is lower. Ask your Mark representative to calculate how much you can save with a RMM VSD. Typically, energy savings run in the double digits!





A total solutions offering from Mark

Line Filters

Eliminate oil and dust from the compressed air to avoid the risk of contamination of your air system and final products.

Air Receiver

Buffer storage for your compressed air helps with condensate separation, pressure stabilization and efficient compressor operation.

Oil-Water Separator

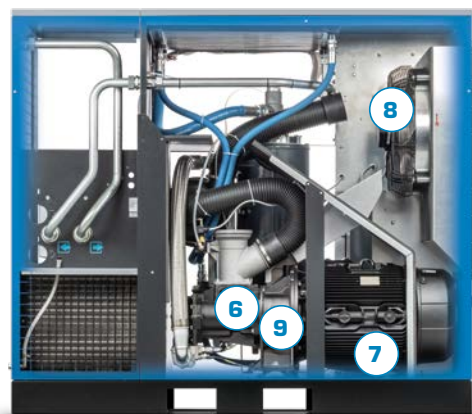
Our oil-water separator captures compressor condensate and separates the oil for safe disposal.

AIRnet

Our easy-to-install piping system distributes your compressed air with maximum efficiency and reliability.

Dryers

You need your compressed air to be dry and clean to protect your pneumatic tools and final products. Mark offers a range of reliable, high-performance dryers to meet your air quality requirements and air system specifications.



1. Pre-filter
2. Oil separator
3. Electrical cubicle
4. Converter
5. Air filter
6. Air end
7. Motor
8. Fan motor
9. Gear box
10. Dryer
11. Oil-sight glass & oil-refill
12. Oil-filter

Optional features

Of course, one size does not fit all.

A range of options is available to tailor your RMM to your specific requirements and production environment.

- Oil 8000h
- Canopy heater
- Food grade oil
- Coalescence filter option
- Water separator drain + automatic drain
- Wooden package
- ES4000T controller
- Main isolator switch
- ECO6i central control



Technical specifications

Fixed speed

Model	Max. working pressure bar	Reference working pressure bar	Motor Power		Free Air Delivery @ reference conditions			Noise Level dB(A)	Cooling Air flow m³/h	Weight	
			kw	hp	m³/h	l/s	cfm			FM kg	FMD kg
RMM 30	7.5	7	30	40	320	89	189	71.5	4800	589	707
	8.5	8			310	86	182				
	10	9.5			274	76	161				
RMM 37	7.5	7	37	50	396	110	233	73	4800	610	728
	8.5	8			365	102	215				
	10	9.5			342	95	201				
RMM 45	7.5	7	45	60	454	126	267	74.5	6700	629	747
	8.5	8			436	121	256				
	10	9.5			400	111	235				

Variable speed

Model	Min. working pressure bar	Max. working pressure bar	Motor Power		Free Air Delivery @ reference conditions				Noise Level dB(A)	Cooling Air flow m³/h	Weight	
					Min.FAD*	Max. FAD*					FM kg	FMD kg
						7 bar	7 bar	8 bar				
			kw	hp	m³/h l/s cfm	m³/h l/s cfm	m³/h l/s cfm	m³/h l/s cfm				
RMM 30 IVR	4	10	30	40	85	318	306	274	71.5	4800	605	723
					24	88	85	76				
					50	187	180	161				
RMM 37 IVR	4	10	37	50	109	401	370	343	73	4800	626	744
					30	111	103	95				
					64	236	218	202				
RMM 45 IVR	4	10	45	60	110	447	434	404	74.5	6700	656	774
					31	124	121	112				
					65	263	255	238				

*400 V 50Hz - IEC - CE



Contact your local representative:

www.mark-compressors.com

6999200530



CARE

Care is what service is all about: professional service by knowledgeable people, using high-quality original parts.

TRUST

Trust is earned by delivering on our promises of reliable, uninterrupted performance and long equipment lifetime.

EFFICIENCY

Equipment efficiency is ensured by regular maintenance. Efficiency of the service organization is how Original Parts and Service make the difference.