



RMB 22 - 26 kW
RMB IVR 22 - 26 kW

Solid, simple, smart:
Advanced reliability in
compressed air





➤➤➤ RMB 22-26 Gear driven RMB 22-26 IVR Direct driven

Compressed air drives your company. Consequently, choosing the right compressor is crucial. Going for our RMB and RMB IVR ranges of highly efficient and flexible oil-injected screw compressors is a choice you will not regret. Bring some fresh air into your company and enjoy the strong performance and high efficiency that come with it.

The new RMB IVR closely follows the air demand by automatically adjusting the motor speed. Combined with the innovative design of direct driven transmission, this results in average energy savings of 35% and an average cut of 25% in the lifecycle cost of a compressor.

User benefits

Simple Installation

- Compact and all in one system, thanks to the oversized integrated dryers. Compressed air quality can be improved by the cyclonic water separator and the coalescent filter is available as an option.
- Innovative design
- Easy and fully protected transport
- No special foundation needed

Solid Quality

Outstanding and first-class components:

- Highly reliable transmissions, for a quiet and trouble-free operation.
- High capacity oil/air coolers, perfect air filtration and cooling guarantee less thermal shocks and a longer lifetime.
- Overload protection and full automatic control.
- High quality and heavy duty motor.

Easy Maintenance and Accessibility

- All service components are located at the front of the machine for excellent accessibility, you just have to open the frontal door for an easy access for service or cleaning, easy access of the coolers, oil filter, separator and air filter replacements.
- Oil-level eye at the front
- Easy and quick check thanks to service door and controller
- Service and cleaning is a one person job

Saving of costs

- Lower energy consumption thanks to IE3 motors or IVR technology
- Optimal efficiency, lubrication and cooling
- Long service intervals

Safety

- Emergency stop
- Protection grid
- IP 54 electrical cubicle
- Internal and external protection for the electric fan.

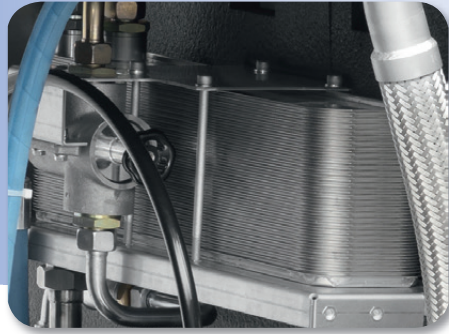
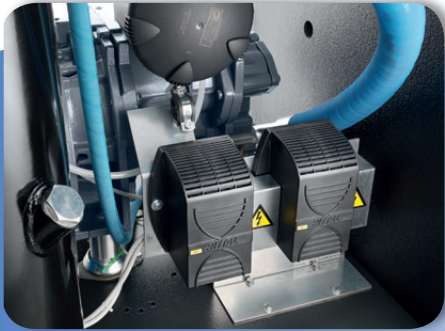
➤➤➤ Optional and standard features

OPTIONS LIST	Factory	Sales
OIL 8000H	✓	✗
CANOPY HEATER	✓	✓
FOOD GRADE OIL	✓	✗
OPTION ENERGY RECOVERY	✓	✓
COALESCENCE FILTER OPTION 0,1 ppm residual oil content	✓ (with dryer)	✓ (with dryer)
WATER SEPARATOR DRAIN (WSD) + automatic drain	✓	✓
PHASE SEQUENCE RELAY	std	std
TROPICAL THERMOSTAT	std	std
WOODEN PACKAGE	✓	✗
ES 4000 advanced controller	✓	✗
Main isolator SWITCH	✓	✗
Silencing baffle	✓	✓

✓ = available ✗ = not available



SMART TECHNICAL ADVANTAGES

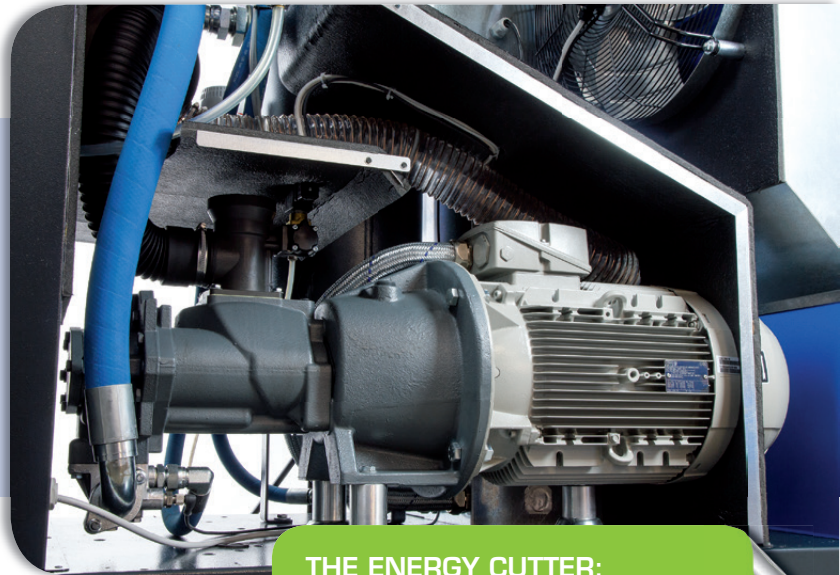


CUSTOMIZE YOUR MACHINES THROUGH A WIDE RANGE OF OPTIONS:

- Energy recovery to recover energy and reduce your energy bill
- Canopy heaters for low temperature installation

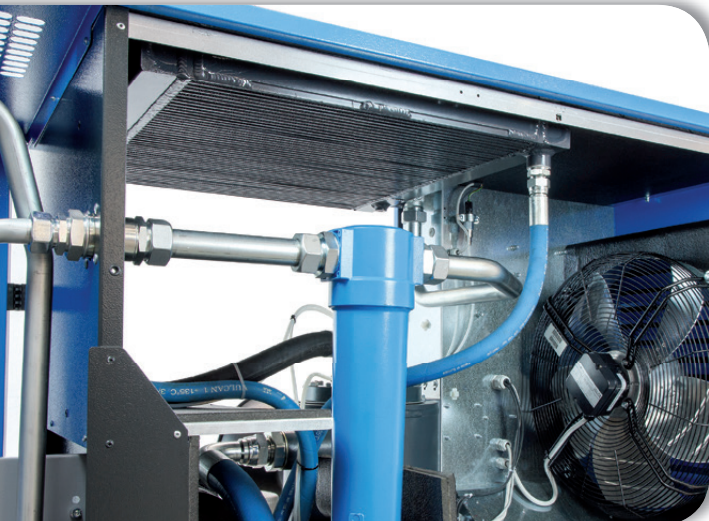


ES 4000 AS STANDARD
ES 4000 ADVANCED AS OPTION
FOR ALL THE MODELS



THE ENERGY CUTTER:

The new direct driven IVR version grants very low specific energy requirements and one of the widest turndowns of its category.



VERY BIG AIR OIL COOLER AND OPTIMIZED AIR FLOW

grant a very efficient cool down. Standard filtration panel extending service intervals. Air and oil filters and the oil vessel are easy to reach from the main door making serviceability very easy and fast.

YOUR ENERGY EFFICIENT AND SOLID PERFORMANCE

- » RMB 22 - 26 gear driven
- RMB 22 - 26 IVR direct driven

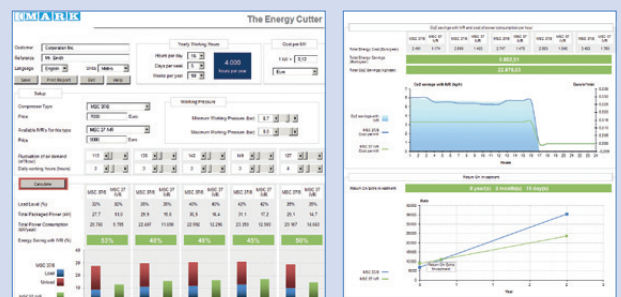


- 1 cooling air filter
- 2 emergency stop
- 3 controller
- 4 oil separator (30 - 37 kW)
- 5 oil separator (22 - 26 kW)
- 6 electrical cubicle
- 7 converter
- 8 air filter
- 9 air end
- 10 motor
- 11 fan motor
- 12 gear box (FS)
- 13 direct transmission (IVR)
- 14 water separator drain
- 15 coalescent filter
- 16 dryer

RMB 26 D

» Energy audit

A frequency driven compressor potentially offers a very energy efficient compressed air installation, with a return on investment of typically 1-2 years. To help you decide to go with a frequency driven compressor or not, MARK has created the Energy Cutter, a tool which calculates in an easy way and visually presents the yearly savings that can be obtained from investing in a frequency driven compressor for any specific industry. Besides the Energy Cutter tool, MARK offers energy audits, specialized advice to make sure you make the right decision when buying your compressor.



TECHNICAL DATA



Fixed speed

FIX SPEED	Max. Working Pressure	Reference Working Pressure	Motor Power		Free Air Delivery @ reference conditions			Noise Level **	Cooling Air flow	Weight	
										FM	FM D
Model	BAR	PSI	kW	hp	m ³ /h	l/s	cfm	dB(A)	m ³ /h	kg	
RMB 22*	7,5	109	22	30	232	65	137	68	2300	445	520
	8,5	123			219	61	129				
	10	145			199	55	117				
	13	189			172	48	101				
RMB 26	7,5	109	26	35	271	75	160	69	4800	460	535
	8,5	123			258	72	152				
	10	145			236	66	139				
	13	189			205	57	120				

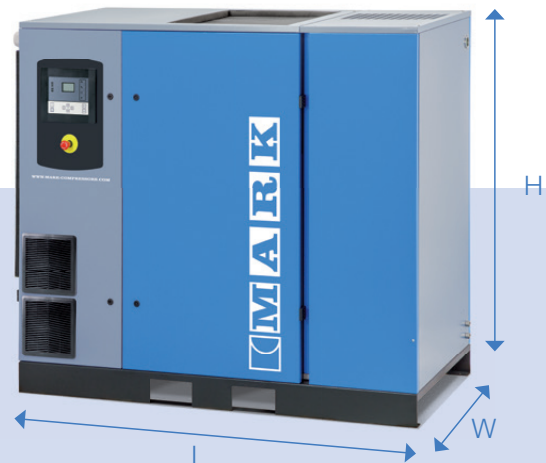
Variable speed

VARIABLE SPEED	Min. working pressure	Max. working pressure	Motor power		Free Air Delivery @ reference conditions *						Noise level**	Cooling air flow	Weight					
					Min FAD *		Max. FAD *											
Model	BAR / PSI	BAR / PSI	kW	hp	7 bar		4 bar		7 bar		9,5 bar		12,5 bar		dB(A)	m ³ /h	FM	FM D
					m ³ /h	l/s	m ³ /h	l/s	m ³ /h	l/s	m ³ /h	l/s	m ³ /h	l/s			kg	
RMB 22 IVR*	5,5-80	13-188	22	30	46	13	250	69	243	68	211	59	176	49	68	2300	434	503
RMB 26 IVR	5,5-80	13-188	26	35	46	13	290	81	277	77	247	69	205	57	69	4800	444	513

* Available only 400 V 50Hz - IEC - CE

Dimensions

Model	DIMENSIONS			
	width mm	height mm	length IVR mm	length IVR + dryer mm
RMB 22 RMB 26	830	1555	1320	1320



Oil injected screw compressors, gear and direct driven

RMB and RMB IVR

MARK



- A high quality product offering you **technology you can trust**.
- Our products are **easy to use** and guarantee high **reliability**.
- Distributors are always nearby ensuring **availability** of both products and support.
- Choosing our high performance products entails a **partnership** that will boost your business.
- Safeguarding long-term productivity through optimal **serviceability** and use of original parts.



Care. Trust. Efficiency.

Care.

Care is what service is all about: professional service by knowledgeable people, using high-quality original parts.

Trust.

Trust is earned by delivering on our promises of reliable, uninterrupted performance and long equipment lifetime.

Efficiency.

Equipment efficiency is ensured by regular maintenance. Efficiency of the service organization is how Original Parts and Service make the difference.

© 2015, MARK. All rights reserved. All mentioned brands, product names, trademarks and service marks are the properties of their respective owners. Our products are constantly being developed and improved. We thus reserve the right to modify product specifications without prior notice. Pictures are not contractually binding.

6999200361



Contact your local MARK representative now!

www.mark-compressors.com